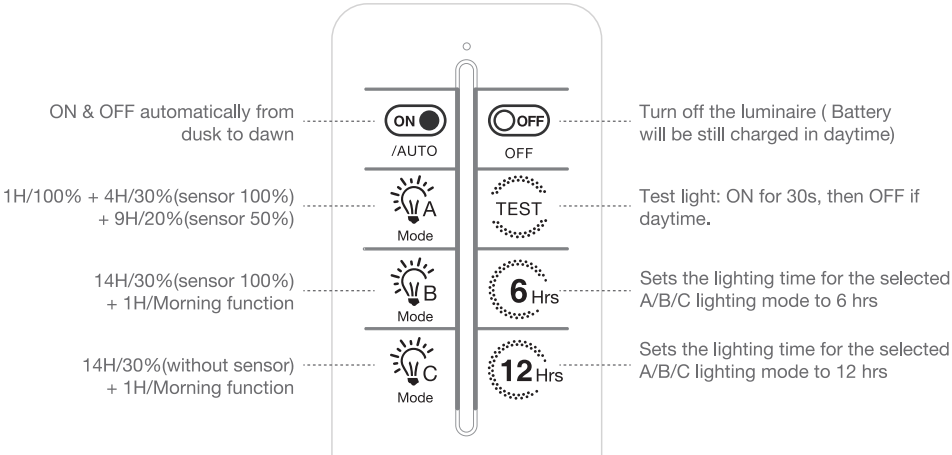


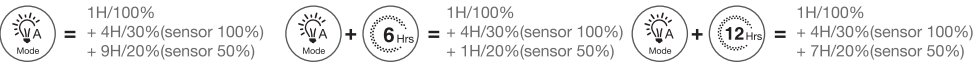
REMOTE CONTROL



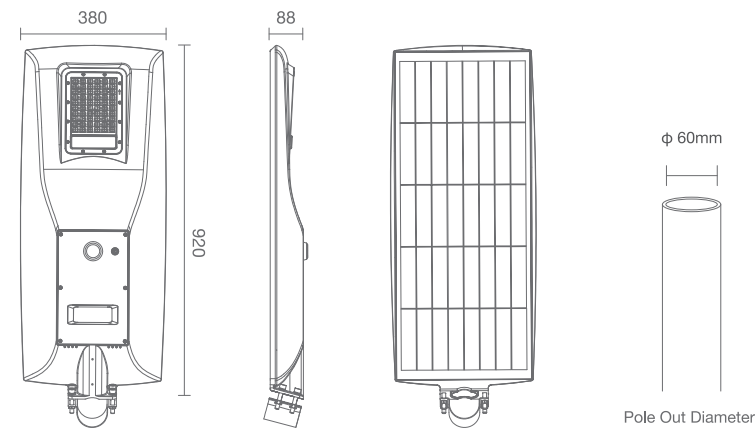
Note :

- 1. Turn on switch button in the solar light before use.
- 2. Default lighting mode: A.
- 3. Modes A/B/C programs could be changed prior to notice, pls be subject to the sticker at backside of remote.
- 4. Press OFF to turn off light (Charging will be still functional), Press ON restores last setted mode.
- 5. 6Hrs/12Hrs : Set duration for current mode (A/B/C). Press mode button (A/B/C) again to reset to default time.

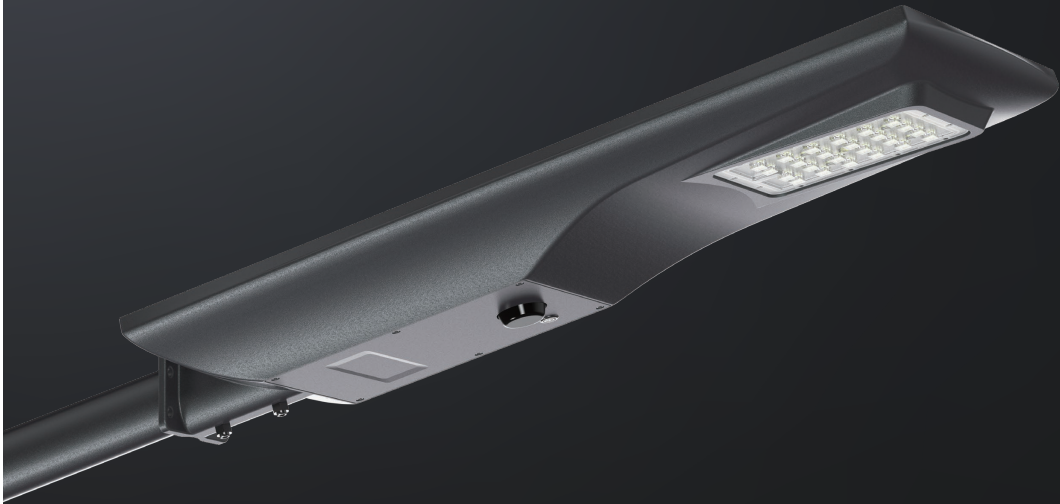
Example



Please note that mode settings (A/B/C) may be updated without prior notification.
Please always refer to the label information of the actual remotes you receive.



USER MANUAL



INTEGRATED ALL IN ONE

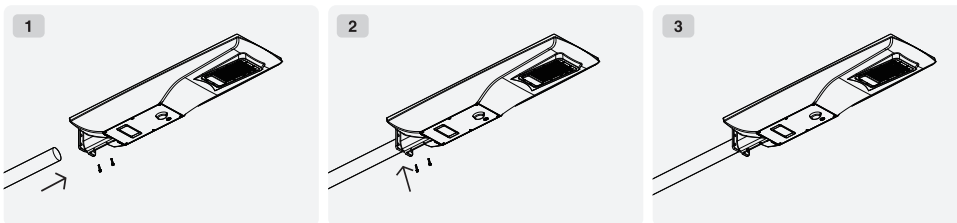
SOLAR STREET LIGHT

180lm/W high luminous efficiency | MPPT Solar Charger | Quality Lithium Battery



HOW TO INSTALL THE LIGHT

Instalalton method A

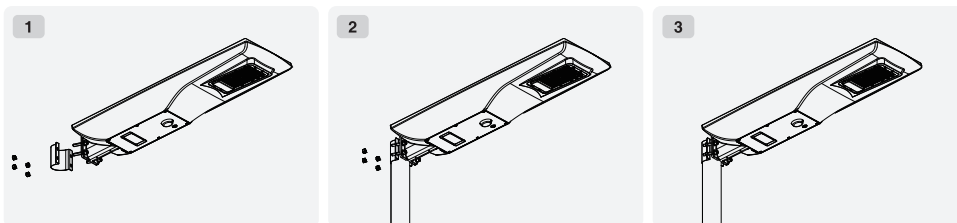


1.Loosen the 2pcs (M8*20) screws on the luminaire, and insert the bracket into the lamp body properly. (This installation method does not require the hoop)

2.Tighten the two pcs (M8*20) screws of the luminaire properly. make sure the luminaire is attached to the bracket tightly enough.

3.Use the remote control to modify the lighting program if needed. (This process could be also operated before installation.)

Instalalton method B



1.Loosen the four screws on the hoop so that the space between the hoop and the luminaire is larger than the diameter of the light pole.

2.Place the lamp at the suitable position on the lamp pole and use a wrench to tighten the 4 screws

3.Use the remote control to modify the lighting program if needed. (This process could be also operated before installation.)



Turn on switch button of the solar light before use.

MATERIAL IN PACKAGE



Solar Luminaire 1pc

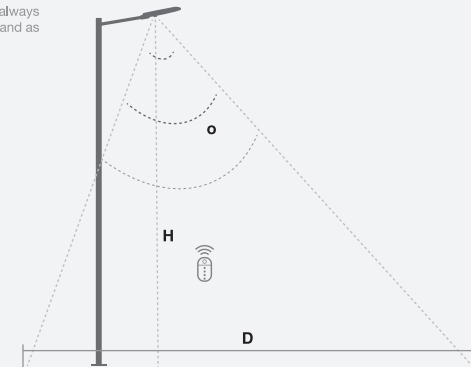


Remote Control (Optional)

MOTION SENSOR

Remote control distance 5-7 meters to the luminaire, installation height and environment and other factors may affect the controller sensitivity, please refer to the actual field.

Note: If possible, please do not place 2 or more lights within 12 meters at the same time while using the remote controller, receiving or sending may fail. Please always place the remote controller right under the fixture and as close to the light as possible.



| Motion sensor | O (angle °) | H (pole height) | D (induction width) |
|-----------------------|-------------|-----------------|----------------------|
| PIR sensor (infrared) | 60° | 6 ~ 8m | 6 ~ 10m |
| Microwave sensor | 65° | 6 ~ 10m | 7 ~ 10m |

INDICATOR STATUS

| Indicator light | States | Discription | State of remote control |
|-----------------|-------------|-----------------|--|
| Red Light | Normally on | Normal system | Idle / discharge |
| | Slow flash | Charging | Charge |
| | Fast flash | System failture | Short circuit/open circuit/over-discharge/PV over-temperature/BV over-temperature/EBMS /over-temperature |

REGULAR TROUBLE SHOT

| Problem | Reason | How to solve |
|--------------------|---------------------------------|---|
| Light is off | Switch is off | Turn on the on/off switch of light |
| | No direct sunshine | Move the light to the direct sunny area |
| | Continuous cloudy or rainy days | Light will back to work when sun returns |
| | There is debris on solar panel | Clean the solar panel |
| Short working time | Location problem | Move the light to the area with direct sunshine |
| | Continuous cloudy or rainy days | Light will be recharged when sun returns |
| | Battery life is expired | Replace with a new battery |