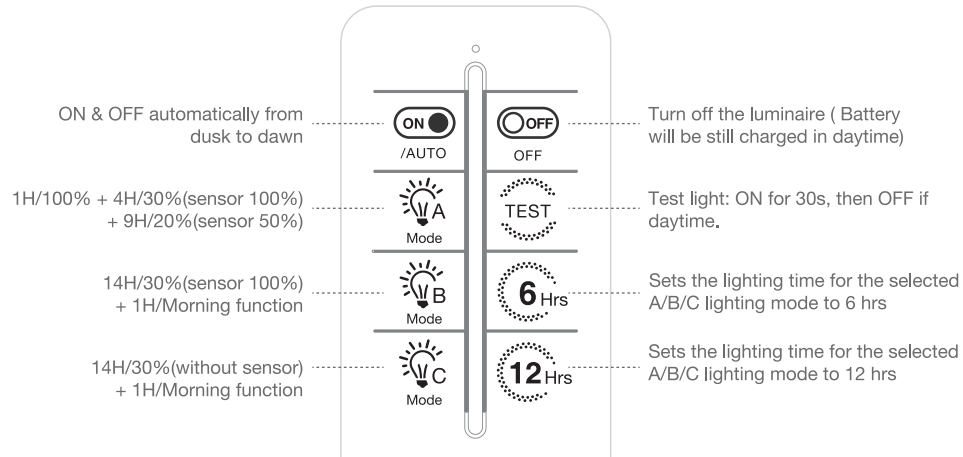


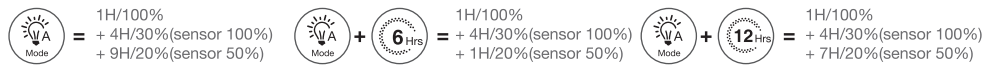
REMOTE CONTROL



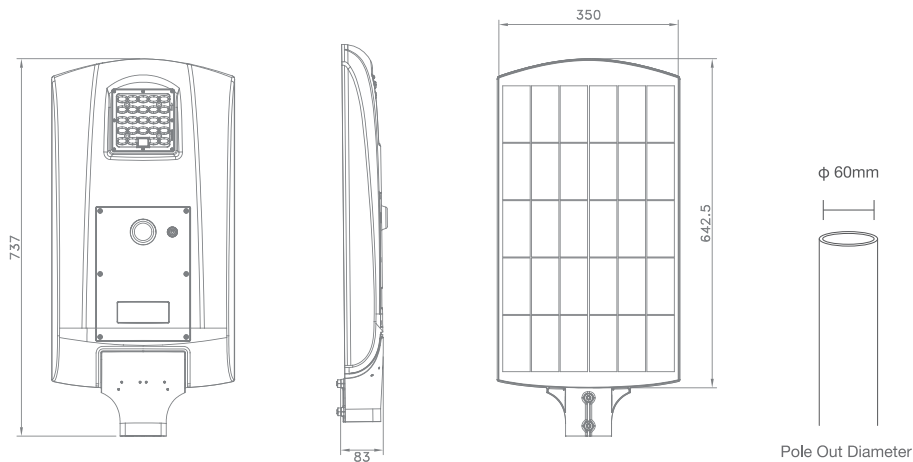
Note :

1. Turn on switch button in the solar light before use.
2. Default lighting mode: A.
3. Modes A/B/C programs could be changed prior to notice, pls be subject to the sticker at backside of remote.
4. Press OFF to turn off light (Charging will be still functional), Press ON restores last setted mode.
5. 6Hrs/12Hrs : Set duration for current mode (A/B/C). Press mode button (A/B/C) again to reset to default time.

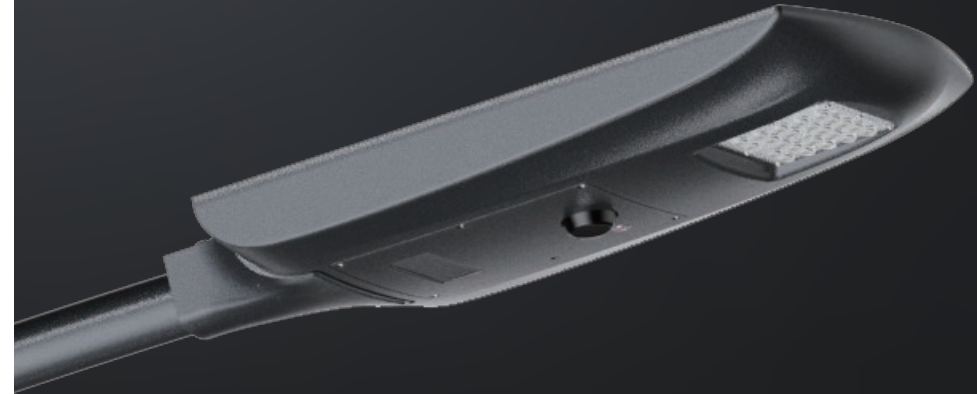
Example



Please note that mode settings (A/B/C) may be updated without prior notification.
Please always refer to the label information of the actual remotes you receive.



USER MANUAL



INTEGRATED ALL IN ONE

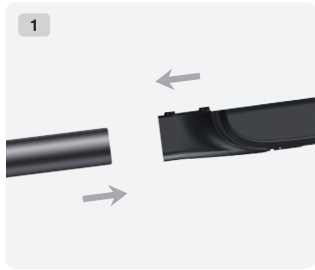
SOLAR STREET LIGHT

180lm/W high luminous efficiency | MPPT Solar Charger | Quality Lithium Battery

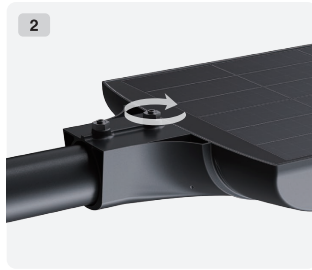




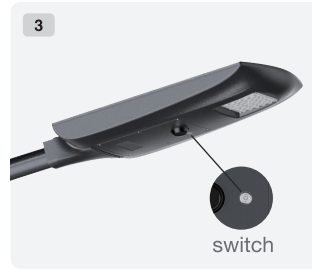
HOW TO INSTALL THE LIGHT



1. Loosen the 2pcs (M8*20) screws in the luminaire, then put the luminaire to the steel pole body properly.



2. Tighten the two pcs (M8*20) screws of the luminaire properly, make sure the luminaire is attached to the bracket tightly enough.



3. Use the remote control to modify the lighting program as you needed. (This process could be also operated before installation.)



Turn on switch button of the solar light before use.

NOTE:

- Solar panels is very fragile, so please do not scratch or bump when installed. Scratches, dirt and shelter on the surface will affect the power generation efficiency of solar panels.
- Solar luminaire installation, such as in the northern hemisphere solar pane should face in the northern hemisphere, such as the southern hemisphere should face south.
- Check the installation guide carefully. Do not disassemble by non-professional technicians or under the guidance of professional technicians.

MATERIAL IN PACKAGE



Solar Luminaire 1pc

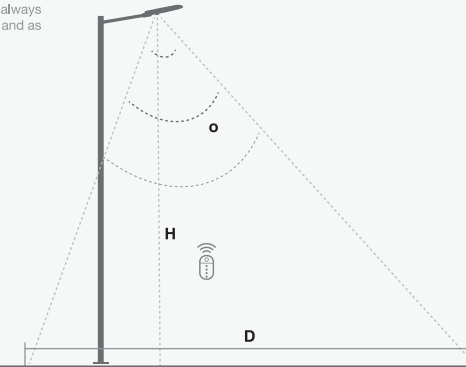


Remote Control (Optional)

MOTION SENSOR

Remote control distance 5-7 meters to the luminaire, installation height and environment and other factors may affect the controller sensitivity, please refer to the actual field.

Note: If possible, please do not place 2 or more lights within 12 meters at the same time while using the remote controller, receiving or sending may fail. Please always place the remote controller right under the fixture and as close to the light as possible.



Motion sensor	O (angle °)	H (pole height)	D (induction width)
PIR sensor (infrared)	60°	6 ~ 8m	6 ~ 10m
Microwave sensor	65°	6 ~ 10m	7 ~ 10m

INDICATOR STATUS

Indicator light	States	Discription	State of remote control
Red Light	Normally on	Normal system	Idle / discharge
	Slow flash	Charging	Charge
	Fast flash	System failure	Short circuit/open circuit/over-discharge/PV over-temperature/BV over-temperature/EBMS /over-temperature

REGULAR TROUBLE SHOT

Problem	Reason	How to solve
Light is off	Switch is off	Turn on the on/off switch of light
	No direct sunshine	Move the light to the direct sunny area
	Continuous cloudy or rainy days	Light will back to work when sun returns
	There is debris on solar panel	Clean the solar panel
Short working time	Location problem	Move the light to the area with direct sunshine
	Continuous cloudy or rainy days	Light will be recharged when sun returns
	Battery life is expired	Replace with a new battery